



## Claymore, Hemel Hempstead, HP2 6LN

### **£1,700 PCM**

Clements Estate Agents are delighted to market this FULLY REFURBISHED, THREE bedroom flat. This spacious flat is ready to move into immediately, with a range of features including, modern kitchen, good size living room, gas central heating and residents parking. Located close to shops and amenities, this flat is in walking distance of all that you need. Other benefits include, white goods, storage space and own internal entrance to flat door. Call now to view!



## External

**Living room 17'8" x 11'5" (5.38m x 3.48m)**



**Bedroom 3 9'4" x 8'6" (2.84m x 2.59m)**



**Bedroom 1 12'6" x 9'8" (3.81m x 2.95m)**



**Kitchen 11'5" x 5'7" (3.48m x 1.70m)**



**Bedroom 2 12'6" x 8'10" (3.81m x 2.69m)**



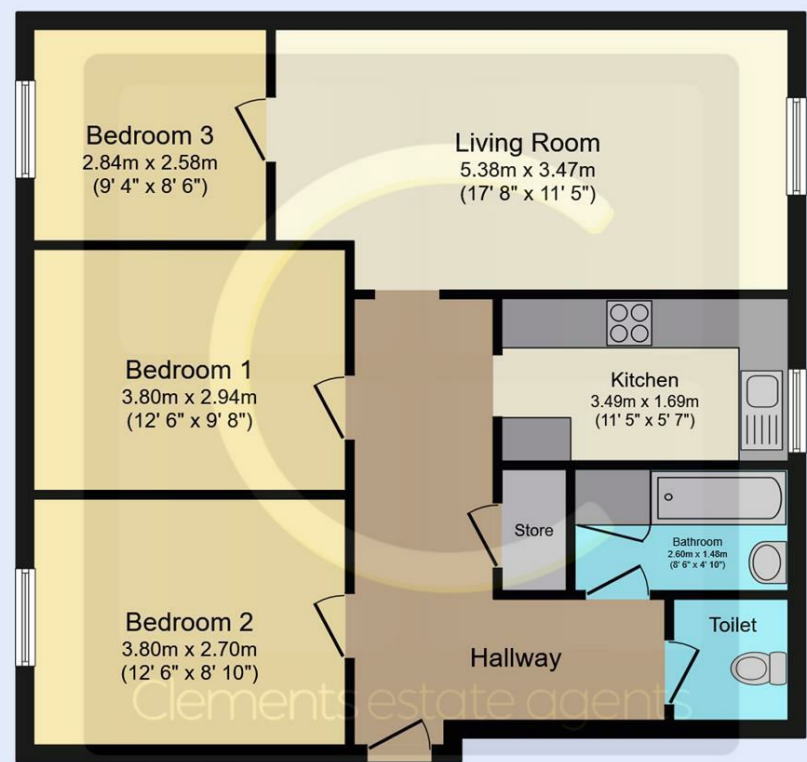
**Bathroom 8'6" x 4'10" (2.60 x 1.48)**



**WC**



Floor Plan

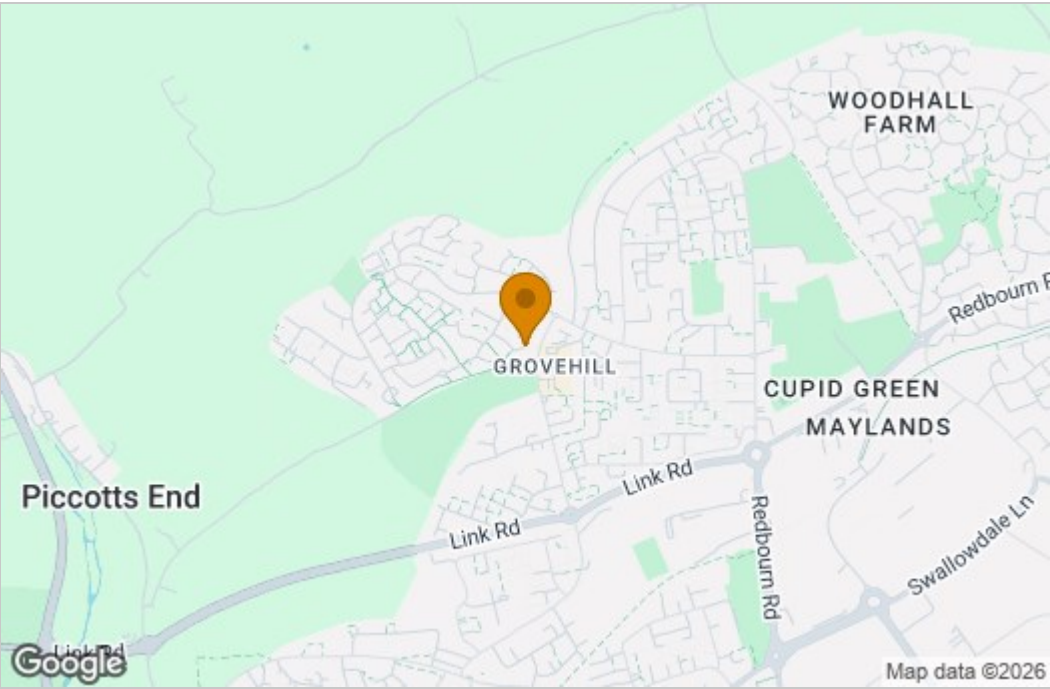


Floor Plan

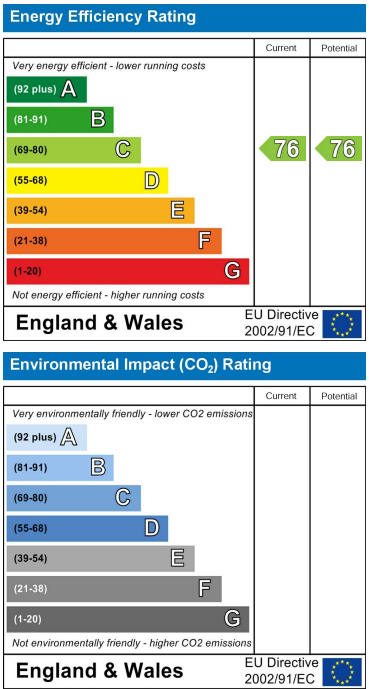
This floor plan is for illustrative purposes only. It is not drawn to scale. Any measurements, floor areas (including any total floor area), openings and orientations are approximate. No details are guaranteed, they cannot be relied upon for any purpose and do not form any part of any agreement. No liability is taken for any error, omission or misstatement. A party must rely upon its own inspection(s). Powered by [www.Propertybox.io](http://www.Propertybox.io)



Area Map



Energy Efficiency Graph



These particulars, whilst believed to be accurate are set out as a general outline only for guidance and do not constitute any part of an offer or contract. Intending purchasers should not rely on them as statements of representation of fact, but must satisfy themselves by inspection or otherwise as to their accuracy. No person in this firms employment has the authority to make or give any representation or warranty in respect of the property.